

Dominic O'Brien,
Principal Scrutiny
Officer

020 8489 5896

dominic.obrien@haringey.gov.uk

16 September 2024

To: All Members of the Adults & Health Scrutiny Panel

Dear Member,

Adults & Health Scrutiny Panel - Thursday 19th September 2024

I attach a copy of the following reports for the above-mentioned meeting which were not available at the time of collation of the agenda:

10. DEMENTIA SERVICES UPDATE (PAGES 1 - 18)

To provide an update on plans to support people with dementia in the Borough.

Yours sincerely

Dominic O'Brien,
Principal Scrutiny Officer

This page is intentionally left blank



North London
Mental Health
Partnership



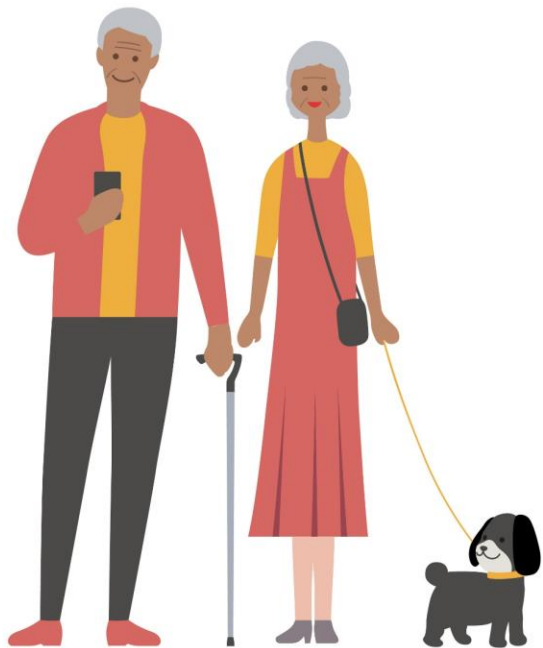
Barnet, Enfield and Haringey
Mental Health NHS Trust

Camden and Islington
NHS Foundation Trust

Older Adults Dementia Focus



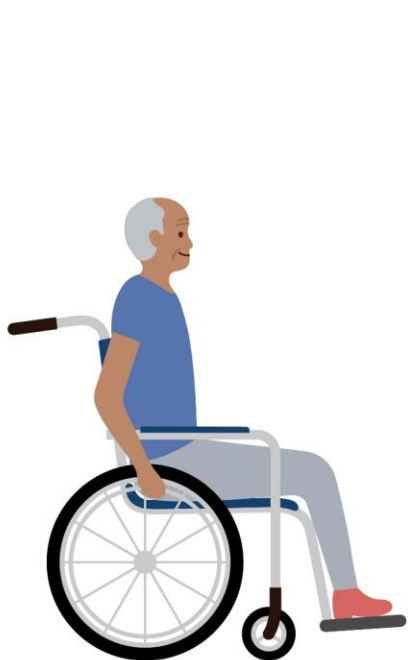
Better Mental Health. Better Lives. Better Communities.



Haringey Memory Service

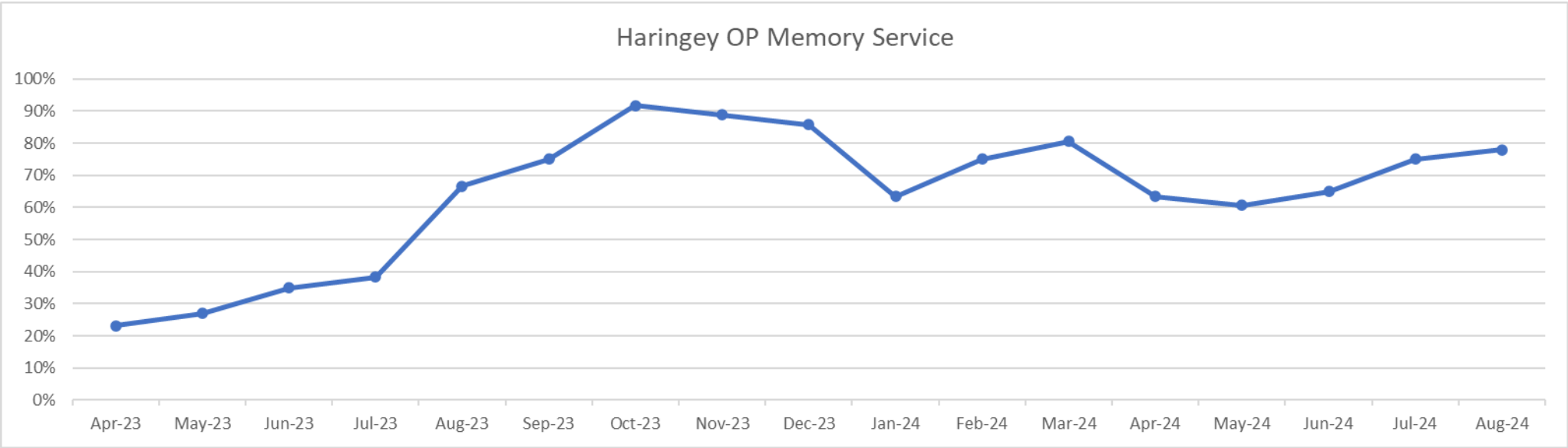
- Assessment / Diagnosis
- Psychology Service
- Psychology Carers Service
- Specialist Dementia Service
- Speech and Language Therapy Service
- Dementia Navigators / Admiral Nurses

Page 2



Haringey Memory Service (Referral to Appointment – 6 Weeks)

Apr-23	May-23	Jun-23	Jul-23	Aug-23	Sep-23	Oct-23	Nov-23	Dec-23	Jan-24	Feb-24	Mar-24	Apr-24	May-24	Jun-24	Jul-24	Aug-24
23%	27%	35%	38%	67%	75%	92%	89%	86%	63%	75%	81%	63%	61%	65%	75%	78%



- This graph demonstrates our performance against this quality standard and the general upward trajectory in recent months.
- The team continues to proactively address concerns and challenges in meeting the standard.
- Haringey Memory Service benchmarks well against neighbouring boroughs for this quality standard.

Future Development

Context:

- Strategy has highlighted the aim of meeting the growing needs of our diverse and ageing population which is predicted to grow by 5% by 2030, with the largest increase in people over 65 years old.
- Currently over 65s make up 16% of the population of NCL and over the next decade this proportion will significantly rise in all boroughs.
- In Haringey total population >18yrs will rise from 208K to 232K. Those >65yrs will rise from 28K (14%) to 42K (18%).
- Future proofing services, integrated offer of support.
- All older adults with mental health needs associated with ageing and frailty will have easy access to local, specialist, high quality care.



Needs-Led Criteria



- We will establish universal, **needs-led eligibility criteria** for older people's services across the Partnership which will reflect the change in the older population with increased longevity and a greater proportion of life spent living with frailty.
- We will adopt a needs-based approach in line with recommendations from the 2015 Royal College of Psychiatrists Faculty Report (FR/OA/04), "Criteria for Old Age Psychiatry Services in the UK":
- People of any age with a primary dementia.
- People with mental disorder and physical illness or frailty that contributes to, or complicates, the management of their mental illness. This may include people under 65 years of age.
- People with psychological or social difficulties related to the ageing process, or end-of-life issues, or who feel their needs may be best met by a service for older people. This would normally include people over 70 years of age.
- Developing a crisis-resolution and home treatment team for Older Adults service users only.

This page is intentionally left blank

Living With Dementia In Haringey -One Year On.

Adult Scrutiny Panel September 2024

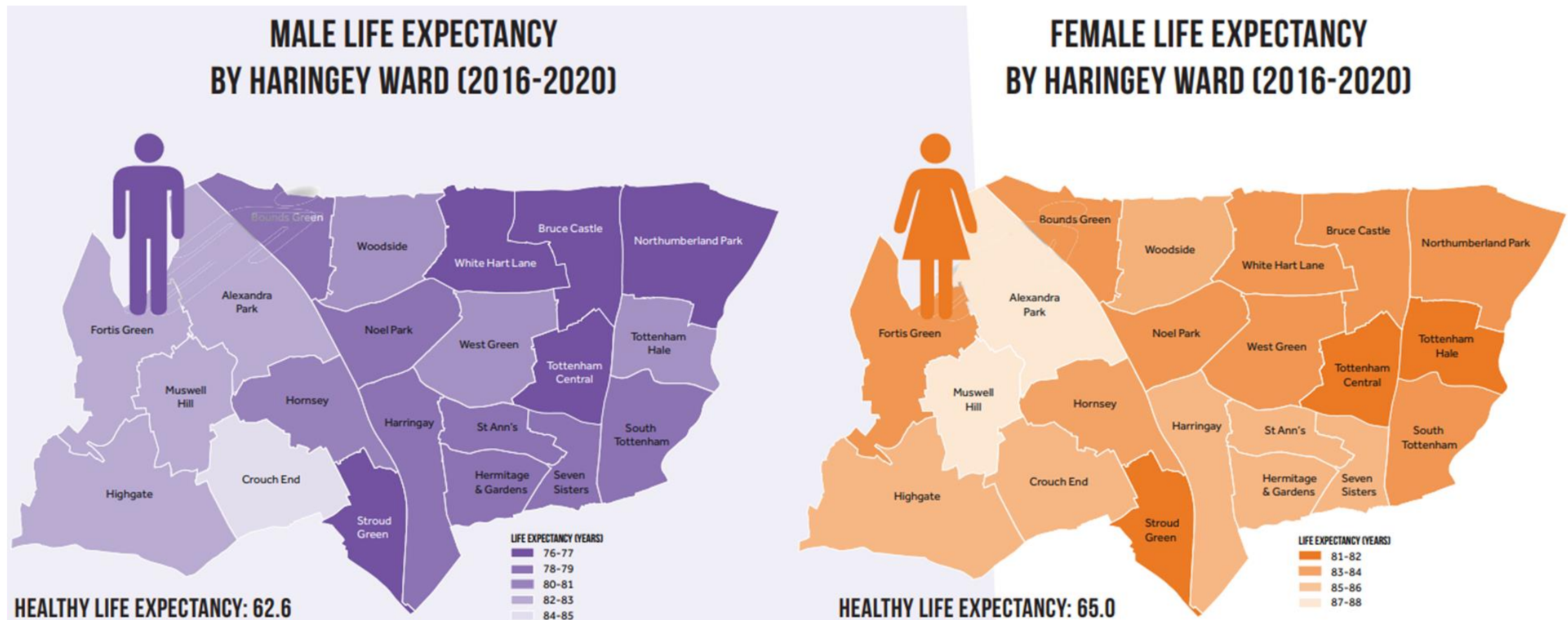
Laura Crouch- Senior Services Manager

Clare Davies- Dementia Co-Ordinator for DFH

Macqueen Njoku- Haynes Team Manager

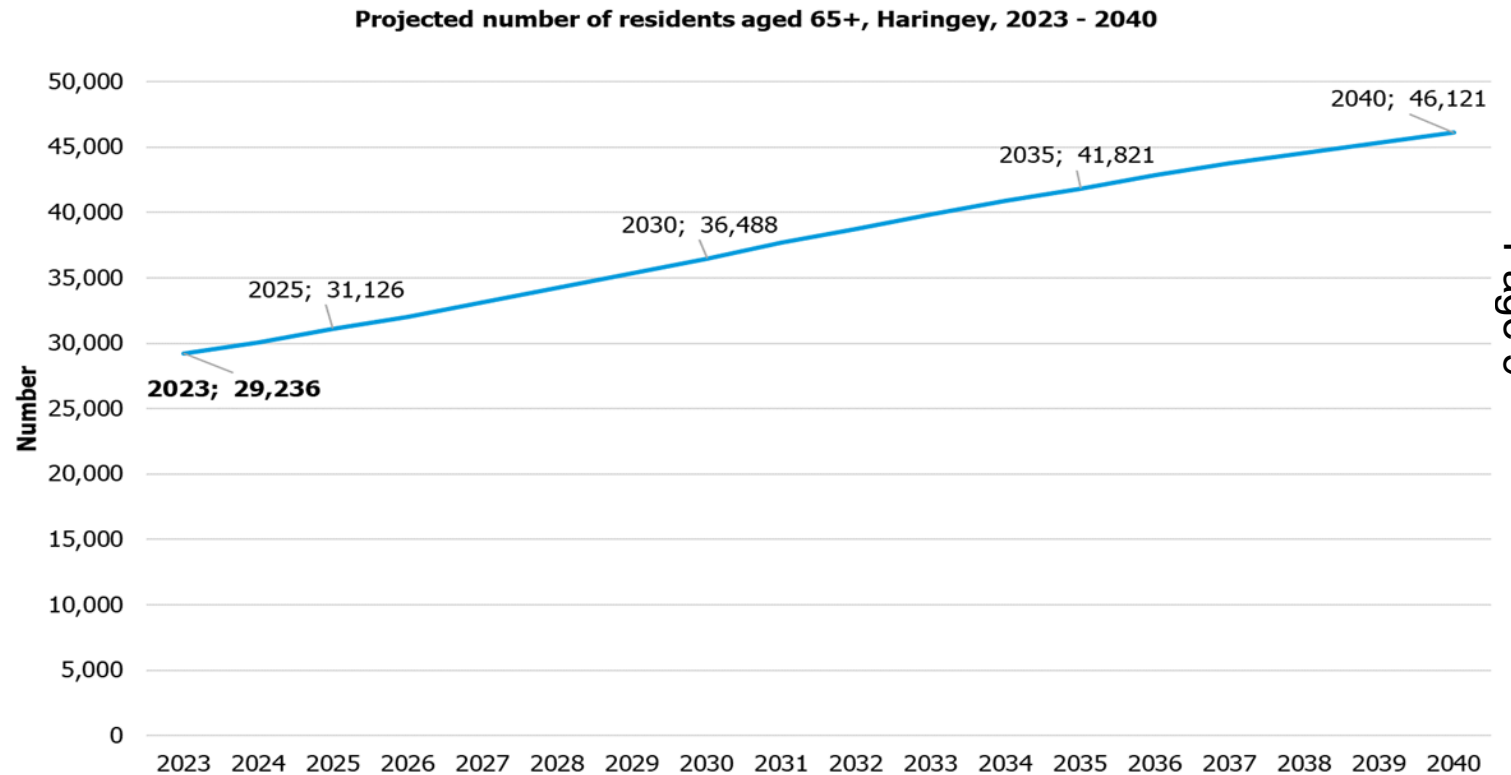


One in three aged 65+ will develop dementia as they age with the risk of acquiring the condition increasing as they get older, with Alzheimer's Disease being the most common. There are 2,300 residents thought to be living with dementia in Haringey in 2023/2024. Around two-thirds of these residents are currently diagnosed with the condition.



Haringey's aged 65+ population is increasing rapidly

- Haringey has an ageing population, with the number of people aged 65+ expected to increase further by almost 17,000 between 2023 and 2040. (58% increase)



Source: GLA 2021- housing led population projections

Dementia Friendly Haringey Priorities

Dementia Friendly Haringey will be a place where people with dementia and their carers :

- Will be respected and experience a greater level of dementia awareness in the community.
- Will have greater access to health and social care support services
- Will have access to a range of local social activities




Dementia Friendly Haringey - Sign Ups:

Since launch, 30 services and organisations have signed up to a minimum of two actions to make their services more dementia friendly.

Tottenham Hotspur Foundation	Cypriot Centre
Haynes Dementia Hub	Bluebird Care
Public Voice	Dementia Carers Count
Staunton Group Practice	Park Theatre
Muswell Hill Practice	Jackson's Lane
Rutland House Surgery	Moving Waves
Highgate Group Practice	Priscilla Wakefield House
Vale Practice	MACCT
Bridge House Medical Practice	Haringey Connected Care
Havergal Surgery	Shared Lives
St Ann's Surgery	Haringey Learning Disability Partnership
Crouch Hall Surgery	North London Hospice
Christchurch Hall Surgery	Parks & Leisure Service
157 Medical Practice	North Central London ICB
Queenswood Medical Practice	Haringey Primary Care


The following are the key achievements for Dementia Friendly Haringey to date, as relate to the **‘Greater level of Dementia Awareness’** programme of work:

- A total of nine DFH Events have been delivered to date in collaboration with DFH partners, across the borough including at the Haynes Dementia Hub, Winkfield Resource Centre, Bruce Castle Museum, Cypriot Centre, Park Theatre and Tottenham Hotspurs Stadium.
- Collaboration with Nathan Hartley Alzheimer’s Society Dementia Friends to deliver in person Dementia Friends sessions locally at locations such as Tottenham Hotspurs Stadium in December.
- Specific programme for Dementia Awareness for GP surgeries, co-developed with DFH and NCL Admiral Nurses, delivered Apr-July 2024.
- DFH Dementia Awareness sessions delivered to Supported Housing and Shared Lives July -Sept 2024.
- Dementia Friendly audits completed at Finsbury Park, Woodside Park and Priory Park.
- Audits completed by local residents living with dementia and carers.
- Circulation of electronic versions of leaflets listing local activities and groups for people with dementia and carers along with Safeguarding leaflet.
- Circulated in Jan 2024 , updated in July 2024 (awaiting NCL approval before recirculating updated versions).
- New Haynes logo chosen from a competition of designs created by service users at the Haynes Dementia Hub.
- New leaflet developed Feb 2024.
- Running stall at People’s Day Event.
- Running stall during Dementia Action Week at Wood Green Customer Service Centre.
- Attendance at Dementia Reference Group meetings to provide DFH updates and answer questions.
- Guest speaker at two ‘Carer and Service User Involvement’ meetings, held at the Memory Service.
- Guest speaker at ‘Carers Information and Support Session’
- Dementia Coordinator attended a number of sheltered housing locations, Jacksons Lane, and wellbeing walks in the borough to provide opportunities to meet and talk with local residents to raise awareness.
- Regular updates on events and new developments in Haringey circulated amongst DFH mailing list.
- During Dementia Action Week (May 2024), communications were delivered across our external website and intranet and social media channels to raise awareness.
- Connecting with underserved communities within Haringey to increase dementia awareness.
- Connections made with Turkish Women’s Philanthropic Association (TWPA), Cypriot Centre, Roj Association and Black Health fair.



The following are the key achievements for Dementia Friendly Haringey to date, as relate to the **‘Greater access to Health and Social Care Support Services’** programme of work:

- **There are now a total of 12 GP surgeries in Haringey signed up to Dementia Friendly Haringey. Examples of actions committed to by the GP surgeries include surgery staff attending dementia awareness sessions to make surgeries more dementia friendly and offering patients with Dementia double appointments or home visits.**
- **Adult Social Services held stalls at our two events to date this year, providing an opportunity for attendees to have in person contact and request follow ups with ASC.**
- **With support from Dementia Coordinator, Highgate Group Surgery and Muswell Hill Practice have held three in person event(s) for patients with dementia and carers of patients with dementia to enable them to find out more about local services and activities.**



The following are the key achievements for Dementia Friendly Haringey to date, as relate to the **‘Have access to a range of local social activities’** programme of work:

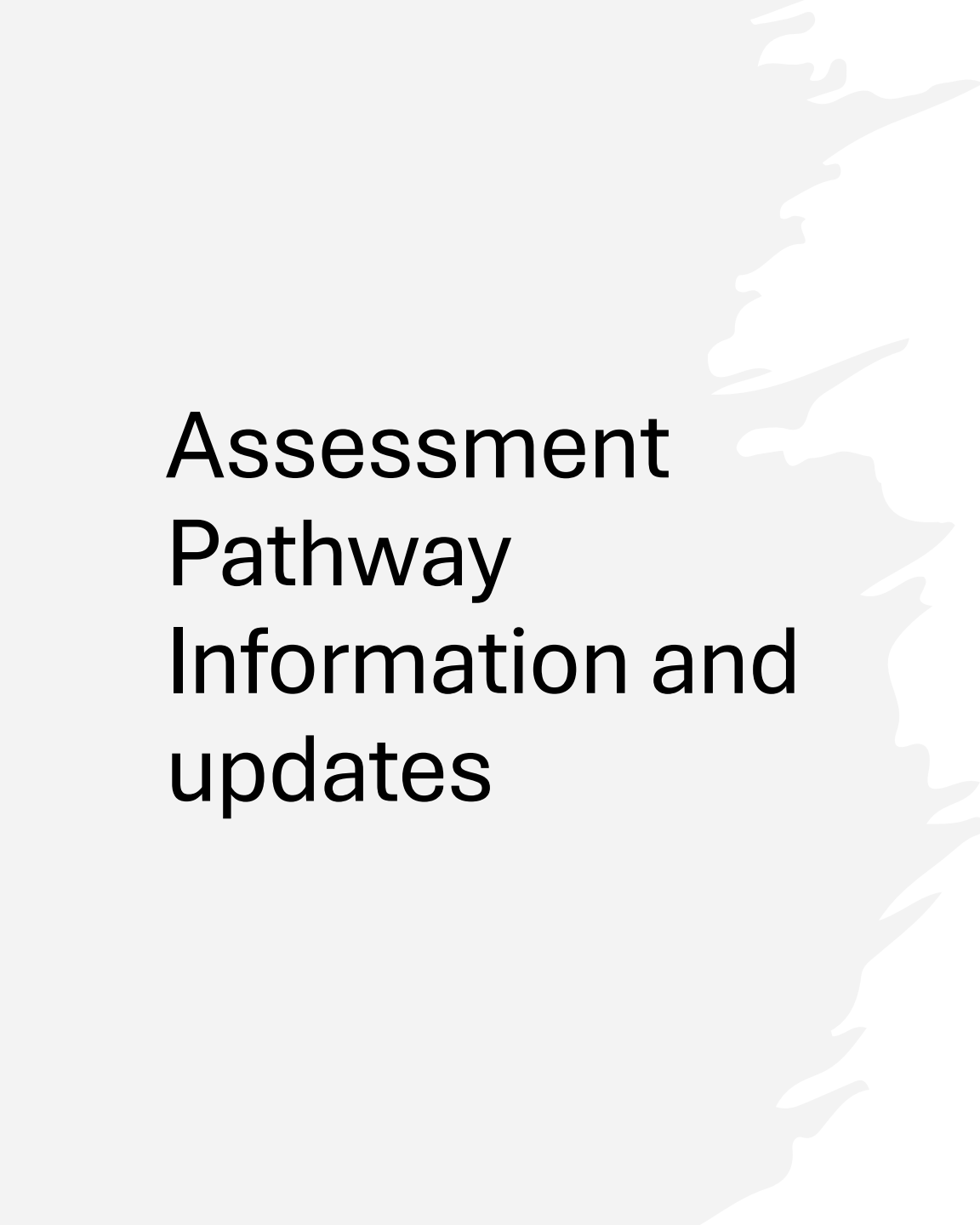
- **A new ‘Sensing A Place Reminiscence Group’ developed and launched at Bruce Castle Museum. The group was developed with consultation from DFH Focus Group members.**
- **In collaboration with DFH, Park Theatre put on a Dementia Friendly theatre performance and increased awareness of regular accessible performances offered at the theatre.**
- **Funding confirmed to launch new weekly ‘Singing for the Brain’ session at Tottenham Hotspurs Stadium, enabling this service to be launched during Dementia Action Week.**
- **Funding confirmed for new creative Carers group at Park Theatre, ‘Kick Off with Verse’. Due to launch early Oct 2024.**

Key Events at the Haynes Dementia Hub

The Haynes continues to offer a wide variety of activities that benefit overall wellbeing, cognitive maintenance and promote physical health.

New and expanded areas of focus this last year have included.

- Carer's Information and Support Programme – Haynes Dementia Hub
- 8 Weeks Memory Service piloting programme to support newly diagnosed clients and their carers through the pathway
- Monthly session of chair based exercise provided by Walter-at the Haynes
- Tom's Club- Series of fortnightly sessions of various activities run by Memory Services in collaborations with the Haynes for people living with dementia and their carers at the Haynes.
- Collaborations with Health on the Frailty & Aging well Strategies -West (few of these sessions were piloted at the Haynes
- DFH community events held at the Haynes.
- Weekly Massage and wellness sessions for clients and carers.
- Partnership sessions with Broadway brunch and Jacksons lane.
- SEN students gaining meaningful qualifications and experience.
- SEN volunteers continue to thrive and gain more skills to move into paid roles.



Assessment Pathway Information and updates

We have 3 access pathways to the haynes

1. The Drop In pay-as-you-go service available AM and PM sessions 5 days per week.
2. The traditional referral through the front door (now localities)
3. The trusted Assessor process, this enables clients to start with us before having a formal support plan review for 1-2 days per week, this has proven very successful over the last 12 months.

The Haynes is currently supporting 40 people with a further handful regularly using the drop ins.

There is also a large cohort that joins us for Toms Club twice a month.

In the last 12 months we have received 27 referrals, of which 16 were offered places, 11 chose to start the service, 5 have deferred until further financial assessments are completed or have declined further input from us. 11 are currently being reviewed with a view to start in the next few months. The current waiting list is 6.

The team is working closely with the localities to ensure the people on the waiting list are reviewed as swiftly as possible.

Learning Disabilities and Dementia

We know that dementia in those with learning disabilities is much more prevalent than the neurotypical population. Those with down syndrome are 50% likely to get dementia after the age of 50.

We currently support 13 individuals with known diagnosis, each has a care co-ordinator. That co-ordinator can do basic function tests, create a dementia care plan which includes a tracker to monitor changes in needs, they can provide support and guidance to families, care homes and carers. They will also make any onwards referrals required.

There is also a cohort of service users who are monitored regularly for signs of cognitive change, of these 34 have a primary diagnosis of downs syndrome.

There is a LD/Dementia surgery every 6 weeks for professionals to discuss and allocate cases.

Referrals can come through internal LAS pathway or the front door.

We are currently creating and piloting 3 new ld/dementia activities. These will be for anyone with dementia and those with dual diagnosis. We will start with our direct support clients and grow through advertising via the DFH groups and internal colleagues.

- Nostalgic music and dance group
- Chair based exercise classes
- A brand new memory café, to be hosted at winkfield resource centre.

These projects are currently in planning and trial phase and will roll out within the next 2 months.

We will provide breakout spaces for carers to relax and bond.

Core Goals for 24/25

Other services

- To continue expanding our collaboration with the Cypriot Centre, The Grace and our residential community hub spaces.
- To ensure all frontline staff have access to dementia friendly information and training

Haynes-

- To continue to work with other agencies to increase Haynes Clients increase through Referrals.
- Work with the 3 Localities social workers to ensuring that newly referred clients receive both Care Act and Financial Assessments timely
- To seek to develop volunteering group for the Haynes to support various activities at the Haynes and to review all provisions to ensuring that they serve the intended purposes for which they were meant for.
- To set up a new carers support offer

Dementia Friendly Haringey-

- Coordinate and Deliver regular DFH Engagement Events
- Coordinate and deliver Dementia Awareness Sessions
- Dementia Friendly Park Audits coordinated and completed at Haringey Leisure Centres
- Updates to leaflets listing local services and activities for people with dementia and carers.
- Dementia Coordinator to provide regular attendance at external dementia events and group meetings to raise awareness in the community.
- Internal and External Communications
- Continuing connections with underserved communities
- Connecting with further GP surgeries to encourage sign up to DFH.
- GP Surgeries holding further events for patients with dementia and carers.
- Inviting Adult Social Services team to attend future DFH events.
- Development of NCL Young Onset CST Group